

PRODUCT ADVANTAGES



- ▶ **The first fire rated glass ceramic made specifically for architectural applications.**
- ▶ Neutral coloration designed to more closely match float glass.
- ▶ Advanced manufacturing process eliminates the added cost of surface polishing.
- ▶ Environmentally-friendly glass ceramic manufactured free of toxins and hazardous heavy metals.
- ▶ Readily available through our factory direct *Quick-Ship* program and our nationwide distributor network.
- ▶ Insulated, obscured and other custom make-ups available.
- ▶ 10 year manufacturer’s warranty.

Fire Rating	Application	Max. CV Area	Max. CV Width	Max. CV Height	Stops
20-90 min.*	Windows Transoms	3,323 sq. in. (2.14 m²)	77 in. (1.96 m)	77 in. (1.96 m)	5/8 in. (16 mm)

*Please see note under Typical Details for limitations.
Maximum sheet size: Approximately 43 x 77 in. (1.09 x 1.96 m)

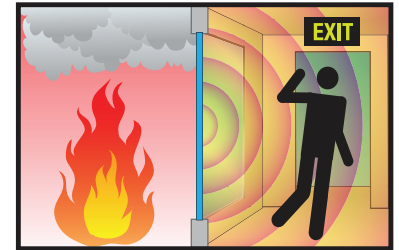
UL AND INTERTEK/WHI TESTED AND CERTIFIED



PYRAN® Platinum by SAFTI *FIRST* is listed and labeled by Intertek/Warnock-Hersey Inc. and Underwriters Laboratories, nationally recognized testing laboratories approved by OSHA. All ceramic products do not meet ASTM E119 or NFPA 251 and should not be used in such applications.

FIRE PROTECTIVE

**Contains smoke and flames.
Does not block radiant heat.**



For fire resistive glazing that blocks radiant heat see SuperLite II-XL.

SPECIFICATIONS

- Thickness:** 3/16 in. (5 mm)
- Weight:** 2.5 lbs./sq.ft. (12 kg/m²)
- Appearance:** Free of amber tint

Fire Rating:
20-90 minutes with hose stream

Impact Safety Rating:
Not impact rated. For impact safety rated ceramics see PYRAN® Platinum F and PYRAN® Platinum L

3-Part Specifications:
Available at
www.safti.com/specifications

APPROVALS

UL 9, NFPA 80, NFPA 257,
ASTM E2074, ASTM E2010-01,
ULC CAN4-S106.



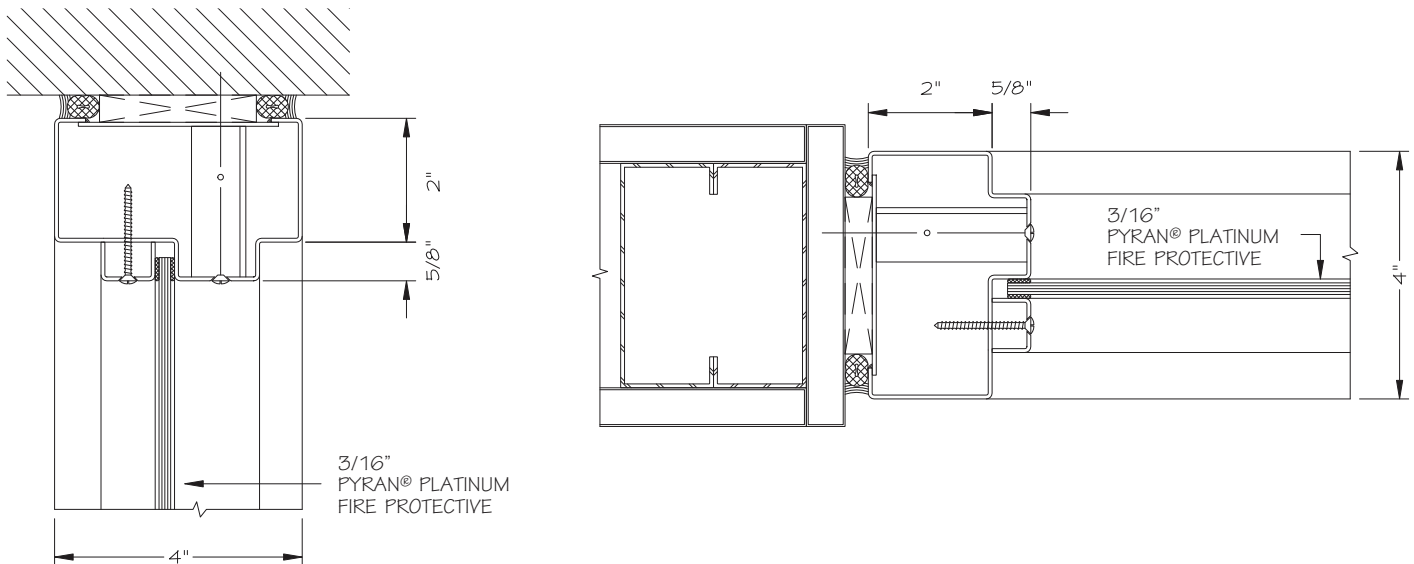


PYRAN® Platinum by SAFTI FIRST is the first environmentally-friendly, fire rated glass ceramic made specifically for architectural applications. This product is ideal for areas such as transoms and windows where human impact safety requirements do not apply.

Project: Lafayette School in San Francisco, CA
Contract Glazier: MAZ Commercial Glass
Products Used: PYRAN® Platinum in GPX Builders Series Fire Protective Framing

TYPICAL DETAILS *More details available at www.safti.com/details*

PYRAN® Platinum in GPX Builders Series Fire Protective



Scale 3" = 1"

* This product cannot be used in doors, sidelites and other locations where human impact safety requirements apply. Fire protective glazing is limited to 25% of the wall area and cannot be used in applications that require ASTM E-119 or NFPA 251.